

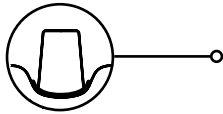
Success simplified

in the indirect restoration workflow

Impression Material Selection Guide

Pretreatment

Gingiva Management



Margin Position	3M™ Astringent Retraction Paste	Single cord (braided / knitted + AlCl ₃)	Double cord (braided / knitted + AlCl ₃)
Supra-gingival	✓	(✓)	×
Equi-gingival	✓	✓	(✓)
Subgingival	✓ (for hemostasis, used on top of cord)	(✓) (in cases with thin gingiva biotype)	✓

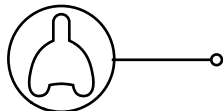
✓ recommended

(✓) possible

× not recommended

Impressioning

Your preferred technique

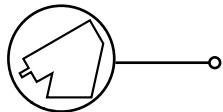


Monophase

1-Step

2-Step

Your material options



Polyether MB

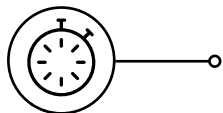
Polyether HB/LB

VPS Putty/LB

OR

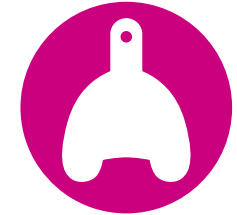
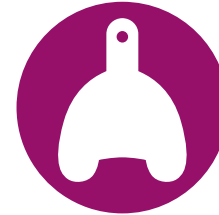
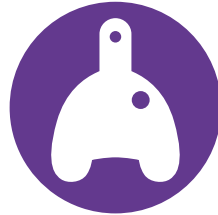
VPS HB/LB

Recommended setting time

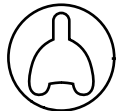


Use (Super) Quick Set for 1-3 units and use Regular Set for ≥ 4 units

Impressioning



Your preferred technique



Open tray direct pick-up

Closed tray direct snap-on

Closed tray indirect transfer

Your material options



Polyether MB or HB+LB

Polyether MB or HB+LB

VPS HB+LB

OR

VPS HB/LB

Recommended setting time



Use (Super) Quick Set for single implant cases and Regular Set for multiple implant cases



Polyether Impressioning Material

Monophase Impressions



ADVANTAGES:

- 3M™ Impregum™ Penta™
- 3M™ Impregum™ Penta™ Soft
- 3M™ Impregum™ Penta™ Soft Quick
- 3M™ Impregum™ Penta™ Super Quick MB

- **Keep it simple** - just one consistency for tray material and syringing
- Ideal **Medium Body** consistency for implants
- Initial **hydrophilicity**

Working time
(in min.)

Intra-oral setting time
(in min.)

1:45

4:15

1:45

4:15

1:00

3:00

0:45

⌚ 2:00

⌚ Save up to 2:15 minutes intra-oral setting time

1-Step Impressions



ADVANTAGES:

- 3M™ Impregum™ Penta™ H DuoSoft™
+
3M™ Impregum™ L DuoSoft™
- 3M™ Impregum™ Penta™ H DuoSoft™ Quick
+
3M™ Impregum™ L DuoSoft™ Quick
- 3M™ Impregum™ Penta™ Super Quick HB
+
3M™ Impregum™ Super Quick LB

- **Firm tray material** and **flowable** wash material
- Perfect for capturing all **details**
- Contrasting colors for **excellent readability**

1:45

4:15

1:45

4:15

1:00

3:00

1:00

3:00

0:45

⌚ 2:00

0:45

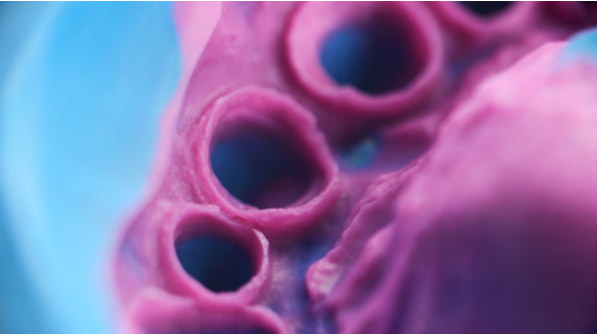
⌚ 2:00

⌚ Save up to 2:15 minutes intra-oral setting time





VPS Impressioning Material

1-Step Impressions



ADVANTAGES:

 **3M™ Imprint™ 4 Penta™ Heavy**
+
 **3M™ Imprint™ 4 Light**

 **3M™ Imprint™ 4 Penta™ Super Quick Heavy**
+
 **3M™ Imprint™ 4 Super Quick Light**

- **Super hydrophilicity** for accurate detail reproduction
- Active self-warming technology for **fast setting** without compromising working time
- Sufficient working time for a **stress-free** procedure

Working time
(in min.)

2:00

1:00


1:15


0:35

Intra-oral setting time
(in min.)

2:00

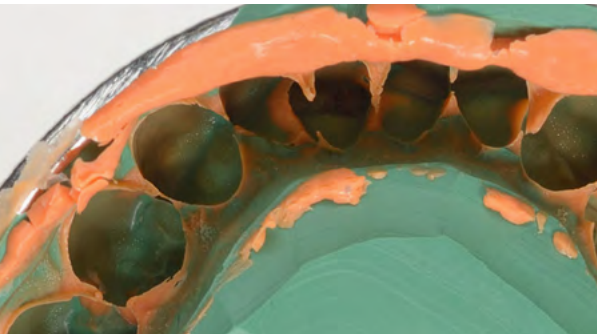
2:00

 1:15



 1:15

 **Fastest intra-oral setting time in the market**

2-Step Impressions



ADVANTAGES:


 **3M™ Imprint™ 4 Penta™ Putty**
+
 **3M™ Imprint™ 4 Super Quick Ultra Light**

- **Super hydrophilicity** for accurate detail reproduction
- **Real putty consistency**

1:30

0:35

2:30

 1:15

 **Fastest intra-oral setting time in the market**