

Test-driving anterior restorations for a highly esthetic outcome.

Giovanni Molina Lugo, DDS, Mexico City, Mexico

Diagnosis and treatment planning: A patient with failing restorations on teeth 9 and 10 desired to have an improved smile and esthetics. A treatment plan called for extraction of tooth 10 and immediate implant placement. 3M™ Protemp™ 4 Temporization Material was utilized to provide immediate function during the tissue healing phase, a diagnostic anterior mock up for smile design, and assistance with tissue conditioning after placement of the final implant abutment.



Fig. 1: Initial Clinical situation. Failed restorations on teeth 9 and 10 and unpleasant patient smile.

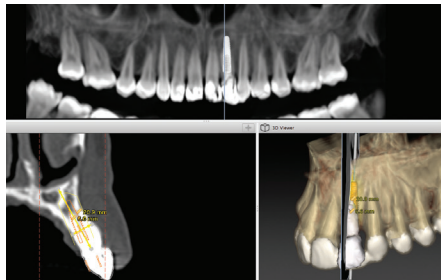


Fig. 2: The CT Scan shows the need for immediate tooth replacement on tooth 10 by placing an implant followed tooth extraction and subsequent implant provisionalization.



Fig. 3: Preliminary diagnostic wax-up and lab-generated temporary crown made with 3M™ Protemp™ 4 Temporization Material prior to implant placement.

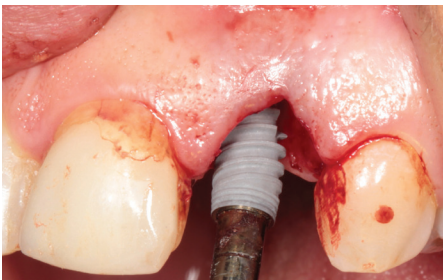


Fig. 4: Immediate implant placement after tooth extraction.



Fig. 5: 3M™ Protemp™ 4 temporary restoration for immediate function.



Fig. 6: Facial aspect of healed tissues after three months of implant placement.



Fig. 7: Digital smile design proposed to the patient showing the need for restoring all the anterior teeth with a conservative approach to obtain a new aesthetic smile.



Fig. 8: Complete diagnostic wax-up of anterior teeth according to digital plan.

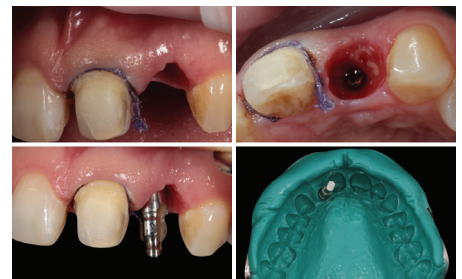


Fig. 9: One step implant and teeth impression with 3M™ Soft Monophase Polyether Impression Material.

Test-driving anterior restorations for a highly esthetic outcome.



Fig. 10: 3M™ Protemp™ 4 temporary anterior restoration mock-up.



Fig. 11: Alveolar model with interchangeable dies for precision dental esthetics restorations.



Fig. 12: Ultra-thin glass ceramic restorations obtained from the lab.



Fig. 13: Final placement of glass ceramic restorations on teeth cemented with 3M™ Single Bond Universal Adhesive and 3M™ RelyX™ Veneer Cement, and placement of zirconia implant abutment.



Fig. 14: 3M™ Protemp™ 4 temporary restoration on implant after final cementation of porcelain veneers, and final placement of implant abutment for tissue conditioning.



Fig. 15: Soft tissue appearance around implant one week later.

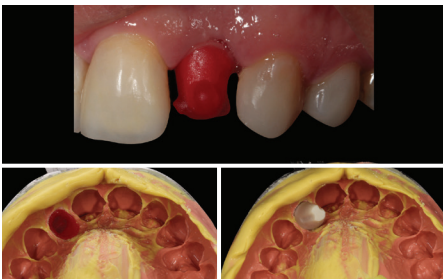


Fig. 16: Pick-up one-step impression with customized impression coping on the implant abutment.



Fig. 17: Picture obtained with polarized light for color details.



Fig. 18: Final crown for implant abutment delivered from the lab.



Fig. 19: Adhesive final cementation of the abutment implant crown using 3M™ Single Bond Universal Adhesive and 3M™ RelyX™ Ultimate Adhesive Resin Cement.

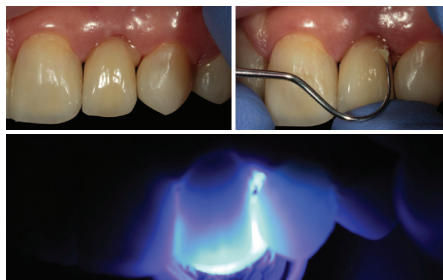


Fig. 20: Excess cement removal and light curing.



Fig. 21: Final restoration in place.



3M Oral Care
2510 Conway Avenue
St. Paul, MN 55144-1000 USA
Phone 1-800-634-2249
Web 3M.com/dental

3M Canada
Post Office Box 5757
London, Ontario N6A 4T1
Canada
Phone 1-888-363-3685

3M.com/Protemp

3M, Protemp and RelyX are trademarks of 3M Company or 3M Deutschland GmbH. Used under licence in Canada. All other trademarks are owned by other companies. Please recycle. © 3M 2017. All rights reserved.